



**Huntington Park**  
Residents and Ratepayers Association

# NEWSLETTER

ISSUE APR 2026

**Huntington Park Residents &  
Ratepayers Association**



## IN THIS ISSUE:

Thank you for a wonderful neighbors day!

Eastern Busway Update  
progress from Pakūranga  
to Botany

Did you know the history  
of Huntington park?

Useful Contacts

Community Content  
Corner

## THANK YOU FOR A WONDERFUL HUNTINGTON PARK NEIGHBOURS DAY!

A big thank you to everyone who joined us at our recent Huntington Park Neighbours Day celebration!

We sincerely appreciate the support from our local board members **Damian** and **Mike, Briar** representatives from Eastern Busway & AT, **Anna & Bob** from Barfoot & Thompson, **Aatir** from Age Concern New Zealand, and **Jo Ding's** team from ANZ. Your presence and contribution helped make the day informative, engaging, and enjoyable for our community.

A very special mention goes to our wonderful neighbour **Alec** – nearly 100 years young! He was up at 4:00am preparing the green bean soup for everyone, and one of the Potluck dishes homemade banana cake was absolutely delicious. What an incredible example of community spirit and generosity.

It was fantastic to see neighbours connecting, families enjoying the activities, and residents learning more about the services and initiatives available in our area. Events like this truly showcase the strength and spirit of the Huntington Park community.

Event photos are available on our website <https://www.hprra.org/>

Thank you again to everyone who supported and attended. We look forward to seeing you at our next community event!



# EASTERN BUSWAY - PROGRESS FROM PAKŪRANGA TO BOTANY

Kia ora,  
Welcome to the Eastern Busway March 2026 project update. The latest project images can be viewed at any time <https://easternbusway.nz/>.

If you have any questions about this information or would like to talk to the team, please call 0800 287 929 or email [info@easternbusway.nz](mailto:info@easternbusway.nz).



## HISTORY OF HUNTINGTON PARK

The Guy family farmed in the area for 40 years from the late 19th century. The Guy homestead, built in 1898, was badly damaged by a suspected arson in 2012.<sup>[1]</sup> The house was later restored.<sup>[4][5]</sup> Huntington Park was named after a farm owned by George Harris in the area, that had the similar name Huntingdom Farm.<sup>[6]</sup>

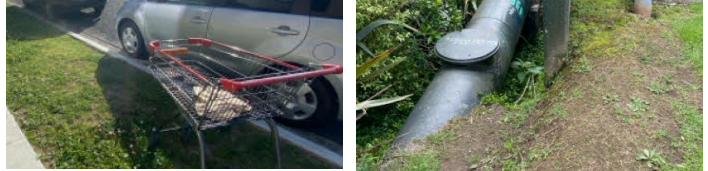
Most of the houses were built in the 1990s.<sup>[2]</sup> Even in 1998, the area was rural.<sup>[3]</sup> The Hub Botany shopping centre opened in Huntington Park in 2001.<sup>[1]</sup>

Huntington Park is now an eastern suburb of the city of Auckland, New Zealand. The area is bounded on the north by Ti Rakau Drive, on the east by Te Irirangi Drive, and to the south and west by the Greenmount Drainage Reserve. The area is called Greenmount on some maps. The northeast corner contains The Hub shopping mall.

References:  
[https://en.wikipedia.org/wiki/Huntington\\_Park,\\_New\\_Zealand](https://en.wikipedia.org/wiki/Huntington_Park,_New_Zealand)

## USEFUL CONTACTS

Have you noticed abandoned shopping carts in the community? Or seen elderly people living alone who may need assistance? Perhaps you've been disturbed by noise late at night? Or have you noticed theft or suspicious individuals in the neighborhood? Below, we have compiled emergency contact information. If you come across any of these situations, please contact the relevant agencies immediately and seek assistance. Contact is available on our website <https://www.hprra.org/useful-contacts/>



## COMMUNITY CONTENT CORNER

2026 Huntington Park Neighbors Day extend the special thanks to:

